

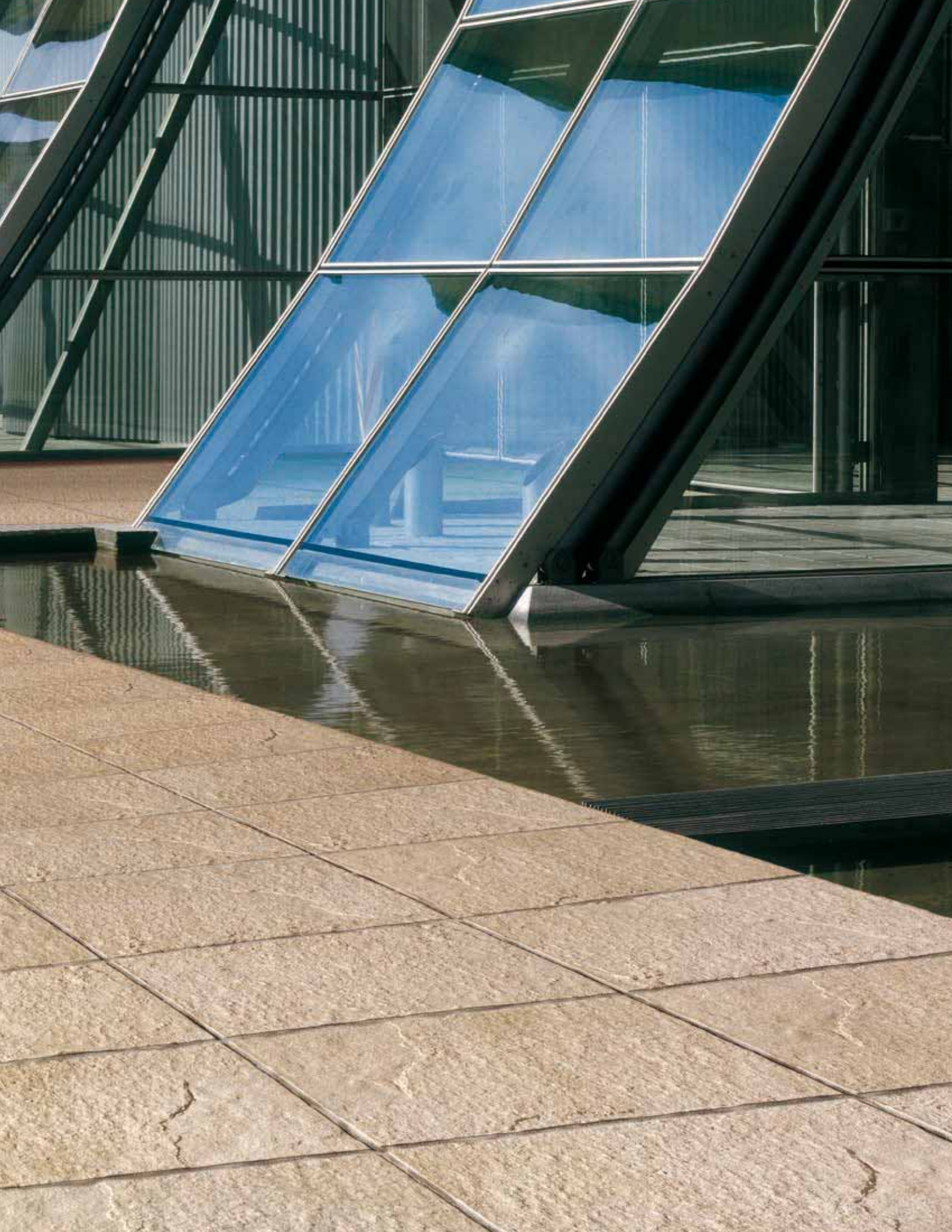


**LASTRICATO**  
GLAZED PORCELAIN STONEWARE

TRANI BG

Ragno Usa rediscovered the strength and beauty of "natural stone" and transposed it into a contemporary urban, metropolitan setting for interior designers and consumers. Artificial, cultural, residential, natural and urban contexts have become the likely places with which man must contend and in which he must operate. It is within this setting that Lastricato branches out, where art, technology and thought converge to describe this "new territory".







PORFIDO RS





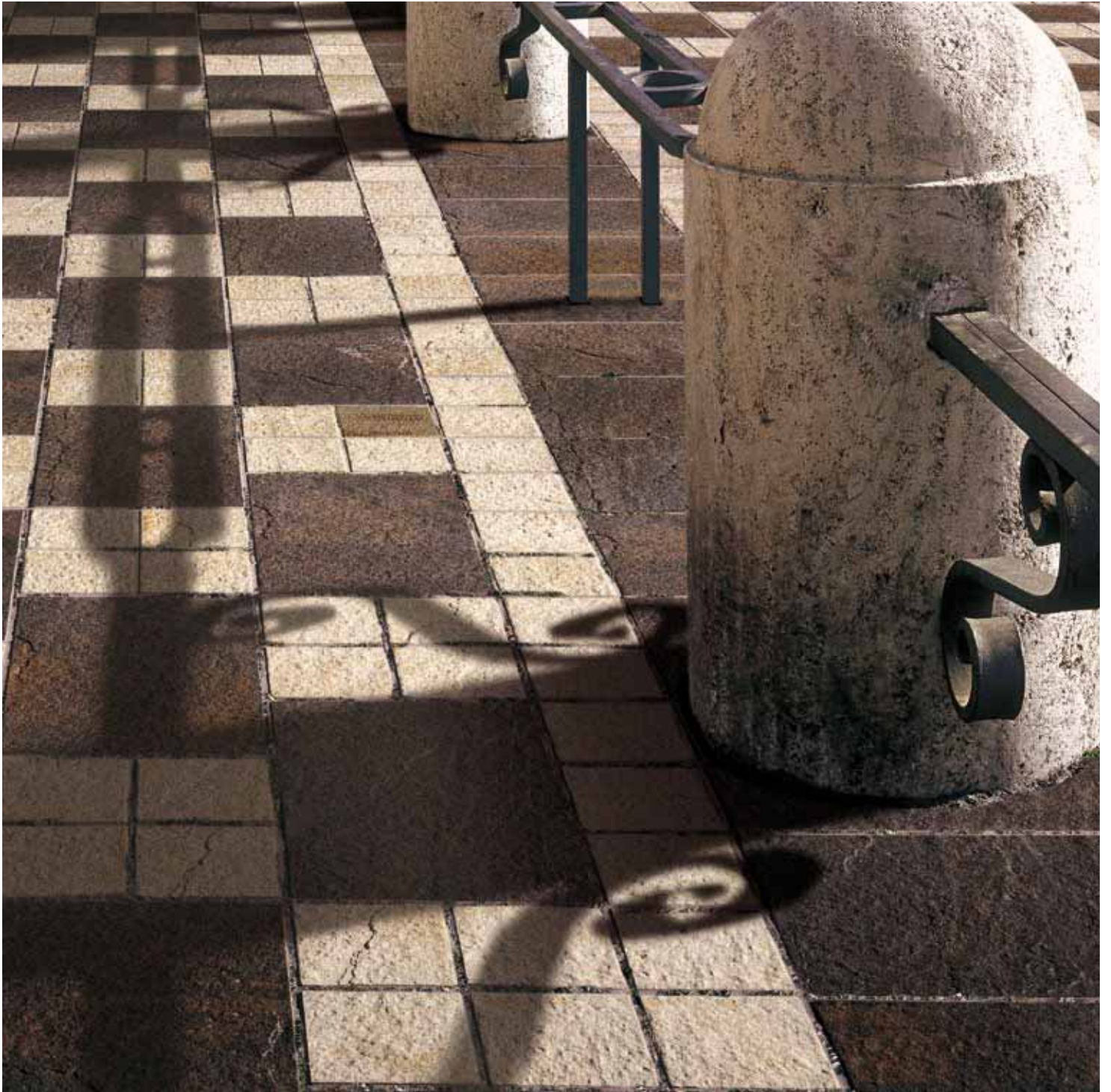


## PORFIDO GR

LASTRICATO is a natural-looking product which is identical to real stone. This fact is reflected by its very name, the Italian noun referring to stone that has been cut or hewn into a geometrical shape, and by the definition of different colors (Porfido, Basalto, Trani, Borriol, Surbo). Therefore, this product should be seen, to all effects and purposes, as a compelling, competitive alternative to the natural stone it imitates, and as such perfectly fitting into spaces where natural stone is usually to be found.



BORRIOL BR





## BASALTO NE

Lastricato is 11 mm thick in all its various sizes, thus lending the product exceptional technical characteristics which make it suitable for high wear applications. This is why Lastricato is particularly indicated for urban contexts that require a highly technical product able to withstand the passage of heavy traffic and weathering. Lastricato's design, both in terms of

attractiveness and technical structure, heightens the characteristics of surface resistance and immutability through time. The coloring particles used in pressing melt and blend in homogeneously with the mix to create a single, harder, more compact body which is actually more resistant than the stone that inspired it.



LASTRICATO  
GLAZED PORCELAIN STONEWARE

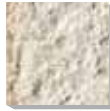
12"x18"  
12"x12"  
5<sup>7</sup>/<sub>8</sub>"x12"  
5<sup>7</sup>/<sub>8</sub>"x5<sup>7</sup>/<sub>8</sub>"  
3<sup>7</sup>/<sub>8</sub>"x3<sup>7</sup>/<sub>8</sub>"



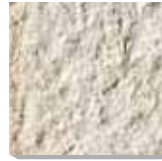
3Y79 Surbo BI  
12"x18"



3Y82 Surbo BI  
12"x12"



3Y91 Surbo BI  
3<sup>7</sup>/<sub>8</sub>"x3<sup>7</sup>/<sub>8</sub>"



3Y88 Surbo BI  
5<sup>7</sup>/<sub>8</sub>"x5<sup>7</sup>/<sub>8</sub>"



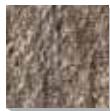
3Y85 Surbo BI  
5<sup>7</sup>/<sub>8</sub>"x12"



2X54 Porfido GR  
12"x18"



2X51 Porfido GR  
12"x12"



2X80 Porfido GR  
3<sup>7</sup>/<sub>8</sub>"x3<sup>7</sup>/<sub>8</sub>"



2X60 Porfido GR  
5<sup>7</sup>/<sub>8</sub>"x5<sup>7</sup>/<sub>8</sub>"



2X57 Porfido GR  
5<sup>7</sup>/<sub>8</sub>"x12"

LASTRICATO  
GLAZED PORCELAIN STONEWARE

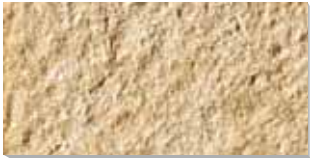
12"x18"  
12"x12"  
5<sup>7</sup>/<sub>8</sub>"x12"  
5<sup>7</sup>/<sub>8</sub>"x5<sup>7</sup>/<sub>8</sub>"  
3<sup>7</sup>/<sub>8</sub>"x3<sup>7</sup>/<sub>8</sub>"



3Y80 Trani BG  
12"x12"



3Y77 Trani BG  
12"x18"



3Y83 Trani BG  
5<sup>7</sup>/<sub>8</sub>"x12"



3Y86 Trani BG  
5<sup>7</sup>/<sub>8</sub>"x5<sup>7</sup>/<sub>8</sub>"



3Y89 Trani BG  
3<sup>7</sup>/<sub>8</sub>"x3<sup>7</sup>/<sub>8</sub>"



2X49 Porfido RS  
12"x12"



2X52 Porfido RS  
12"x18"



2X55 Porfido RS  
5<sup>7</sup>/<sub>8</sub>"x12"



2X58 Porfido RS  
5<sup>7</sup>/<sub>8</sub>"x5<sup>7</sup>/<sub>8</sub>"



2X78 Porfido RS  
3<sup>7</sup>/<sub>8</sub>"x3<sup>7</sup>/<sub>8</sub>"

LASTRICATO  
GLAZED PORCELAIN STONEWARE

12"x18"  
12"x12"  
5<sup>7</sup>/<sub>8</sub>"x12"  
5<sup>7</sup>/<sub>8</sub>"x5<sup>7</sup>/<sub>8</sub>"  
3<sup>7</sup>/<sub>8</sub>"x3<sup>7</sup>/<sub>8</sub>"



3Y78 Borriol BR  
12"x18"



3Y81 Borriol BR  
12"x12"



3Y90 Borriol BR  
3<sup>7</sup>/<sub>8</sub>"x3<sup>7</sup>/<sub>8</sub>"



3Y87 Borriol BR  
5<sup>7</sup>/<sub>8</sub>"x5<sup>7</sup>/<sub>8</sub>"



3Y84 Borriol BR  
5<sup>7</sup>/<sub>8</sub>"x12"



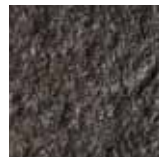
2X53 Basalto NE  
12"x18"



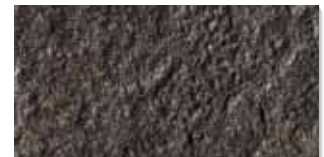
2X50 Basalto NE  
12"x12"



2X79 Basalto NE  
3<sup>7</sup>/<sub>8</sub>"x3<sup>7</sup>/<sub>8</sub>"



2X59 Basalto NE  
5<sup>7</sup>/<sub>8</sub>"x5<sup>7</sup>/<sub>8</sub>"



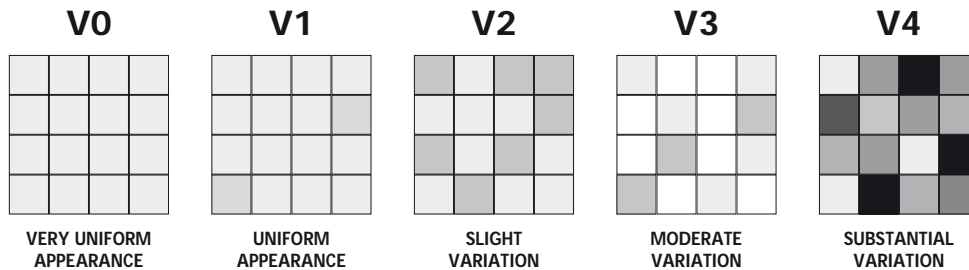
2X56 Basalto NE  
5<sup>7</sup>/<sub>8</sub>"x12"

## Shade variations

The color and shade of all tiles vary to some degree. This variance can be from piece to piece and can also occur from production run to production run.

American National Standard Specifications for Ceramic Tile (ANSI) has implemented a guide that rates ceramic tile on a five-point scale and ranges from V0 through V4.

Instituting the ANSI's color shade variation guidelines you will reduce customer complaints and sell the unique and individual beauty of each ceramic tile.



### V0 Very Uniform Appearance

Pieces of the same shade value are very uniform and smooth in texture.

### V1 Uniform Appearance

Differences among pieces from the same production run are minimal.

### V2 Slight Variation

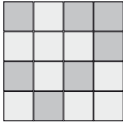
Clearly Distinguishable differences in texture and/ or pattern within similar colors.

### V3 Moderate Variation

While the colors and or texture present on a single piece of tile will be indicative of the colors and/or texture to be expected on the other tiles, the amount of colors and/or texture on each piece may vary significantly. It is recommended that the range be viewed before selection.

### V4 Substantial Variation

Random color and/or texture differences from tile to tile, so that one tile may have totally different colors and/or texture from that on other tiles. Thus, the final installation will be unique. It is recommended that the range be viewed before selection.

SHADE VARIATION AND APPLICATIONS				
V2		Residential	Commercial	Industrial
 <p>SLIGHT VARIATION</p>	Floor	•	•	
	Wall	•	•	•
	Countertop	•	•	•
	Pool	•	•	•

Water, oil, grease, or other fluids create slippery conditions. Floors with exposure to these conditions require extra caution in product selection and proper maintenance.

# TECHNICAL FEATURES

## Care & Maintenance

Lastricato is a stain-resistant porcelain tile. Routine maintenance will keep your tile looking new for years to come.

Ragno USA's products are typically easy to install and maintain using the following general guidelines:

- Choose tile from same dye lot and caliber whenever possible
- Select tile alternately from several boxes and rotate when installing
- Follow industry-accepted installation practices as detailed by Tile Council of America "Handbook for Ceramic Tile Installation" or those recommended by the Ceramic Tile Institute of America
- Remove all grout residue promptly after application; neither acid cleaning nor sealing is recommended
- Clean regularly with clear water and/or a neutral (soapless) cleaner, wipe dry to lessen slippery conditions



Floor Tile



Wall Tile



Abrasion Resistance



C.O.F. (Wet)



C.O.F. (Dry)



Slight Variation



Trim Available



Frost Resistant



Meets ADA Recommendations

TECHNICAL SPECIFICATIONS				
DESCRIPTION	ANSI STANDARD	RESULT	ASTM TEST METHOD	
Water Absorption	≤ 0.50%	≤ 0.50%	C373	
Frost Resistance	As Reported	Resistant	C1026	
Scratch Resistance	MOHS 1-10	8	MOHS SCALE	
Breaking Strength	12"x18"	≥ 250 lbf.	≥ 500 lbf.	C648
	12"x12"	≥ 250 lbf.	≥ 655 lbf.	C648
Facial Dimension	-3.0 % < Nominal < 3.0 %	Within Standard	C499	
Thickness	≤ 0.04 in (1.02 mm max)	Within Standard	C499	
Wedging (Squareness)	+/- 0.50 % or +/- 2.0 mm*	Within Standard	C502	
Warping (Flatness)	+/- 0.75 % or +/- 2.3 mm*	Within Standard	C485	
Abrasion Resistance	Class 0 - Class V	Class IV	C1027	
C.O.F. (Wet)	As Reported	0.60 ≤ COF < 0.70	C1028	
C.O.F. (Dry)	As Reported	0.70 ≤ COF < 0.80	C1028	
Chemical Resistance	Class A - Class E	Class A	C650	
Stain Resistance	Class A - Class E	Class A	C1378	

\* Whichever is less

PACKAGING								
	SIZE	THICKNESS	BOX			PALLET		
			PCS	SQ FT	LBS	BOXES	SQ FT	LBS
Floor Tile	12"x18"	7/16"	09	13.08	62.00	34	444.72	2108.00
Floor Tile	12"x12"	7/16"	12	11.63	55.00	40	465.20	2200.00
Floor Tile	5 <sup>7</sup> / <sub>8</sub> "x12"	7/16"	17	7.69	39.00	60	461.40	2340.00
Floor Tile	5 <sup>7</sup> / <sub>8</sub> "x5 <sup>7</sup> / <sub>8</sub> "	7/16"	34	7.69	39.00	56	430.64	2184.00
Floor Tile	3 <sup>7</sup> / <sub>8</sub> "x3 <sup>7</sup> / <sub>8</sub> "	7/16"	50	4.86	24.00	80	388.80	1920.00





**RAGNO**  USA

Ragno USA, Inc.

Telephone:  
(972) 232 3802  
Fax:  
(972) 725 3127  
Toll Free:  
888 297 2466

359 Clay Road  
Sunnyvale, TX 75182  
USA

Web site:  
[www.ragnousa.com](http://www.ragnousa.com)  
E-mail:  
[info@ragnousa.com](mailto:info@ragnousa.com)